



SHEERLINE[®]
ALUMINIUM WINDOWS AND DOORS

*Prestige
bi-folds*



Beautiful aesthetics with exceptional thermal performance.

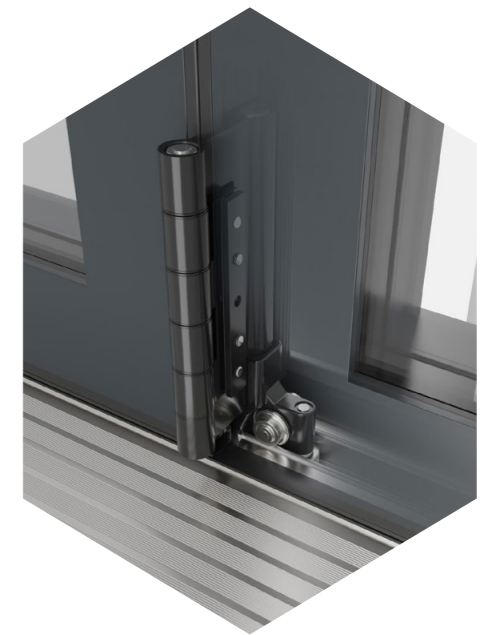
*Prestige
bi-folds*





Beautifully balanced bi-folds

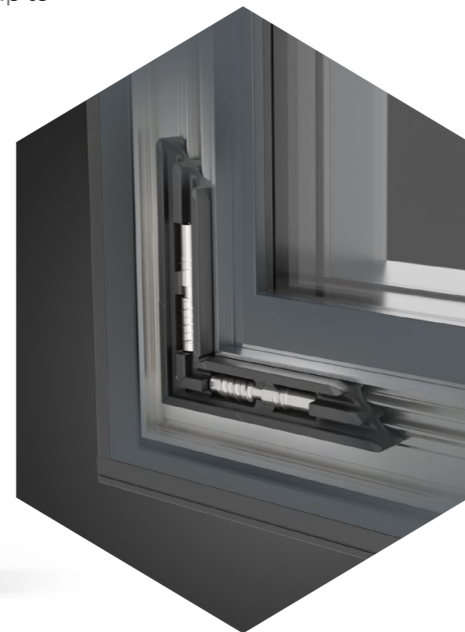
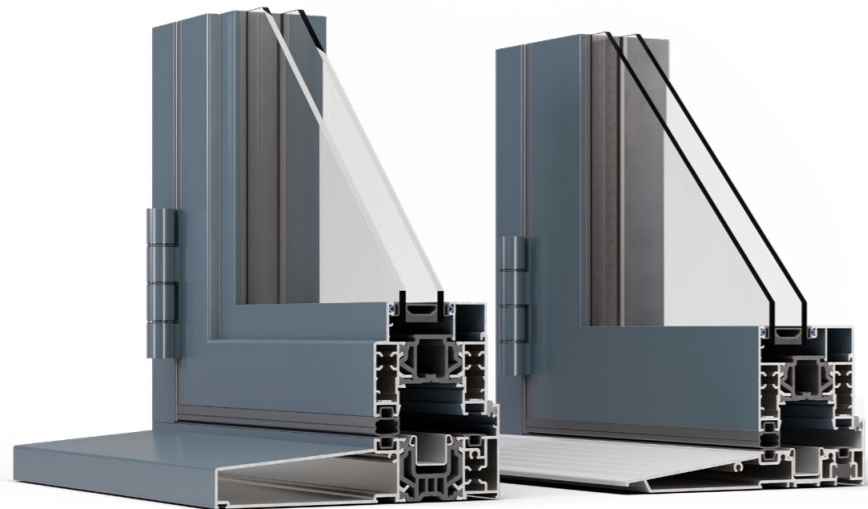
Prestige bi-folds enable you to open up and transform your home. Providing that all important flexibility to enjoy your indoor and outdoor space as one. Combining the refined, architectural look of aluminium and the latest thermal and security technology, leaving you with beautifully balanced bi-folding doors.



Open up your home and fill it with natural light

Bi-folding doors should maximise the light flooding into your home, and the enjoyment of your garden or patio. Bringing an improved sense of space and creating panoramic views that can transform interiors. They also need to offer reliable operation, while keeping heating bills low, and would-be intruders out. That is why we have designed our Prestige bi-folds to offer you the perfect balance of refined looks, exceptional thermal performance and outstanding operation. Building on years of experience, we've incorporated

many new innovative ideas to create a refined aluminium system that's ideal for discerning homeowners who aren't willing to compromise. Unique Thermlock® technology provides exceptional thermal performance, while bespoke locking systems and our patented construction method provides unparalleled levels of security. These slim, perfectly balanced bi-folds are available in stepped and contemporary 'flat-faced' styles, in configurations up to 7 panes wide.





Bring the outside in

Prestige bi-folds can help soften boundaries, creating an increased sense of space and a seamless transition between your garden and the inside of your home.

Slim, equal 138mm sash-to-sash sightlines ensure light bathes your interiors, even when your doors are closed. Giving you bright airy interiors no matter what style or configuration you choose.



Exceptional thermal performance with Thermlock® technology

Our innovative Thermlock® multi-chamber thermal design, hidden away inside each Prestige bi-folding door, helps keep you well insulated against the worst of the UK weather. These closed-cell, insulating chambers act as thermal breaks, working in conjunction with high performance glazing to create class leading thermal performance, far superior to traditional polyamide thermal breaks. Sheerline's cills also feature this same technology coupled with innovative in-built weather sealing keeping draughts and rain safely outside.

1.4 U-value

W/(m²K)
Double glazed

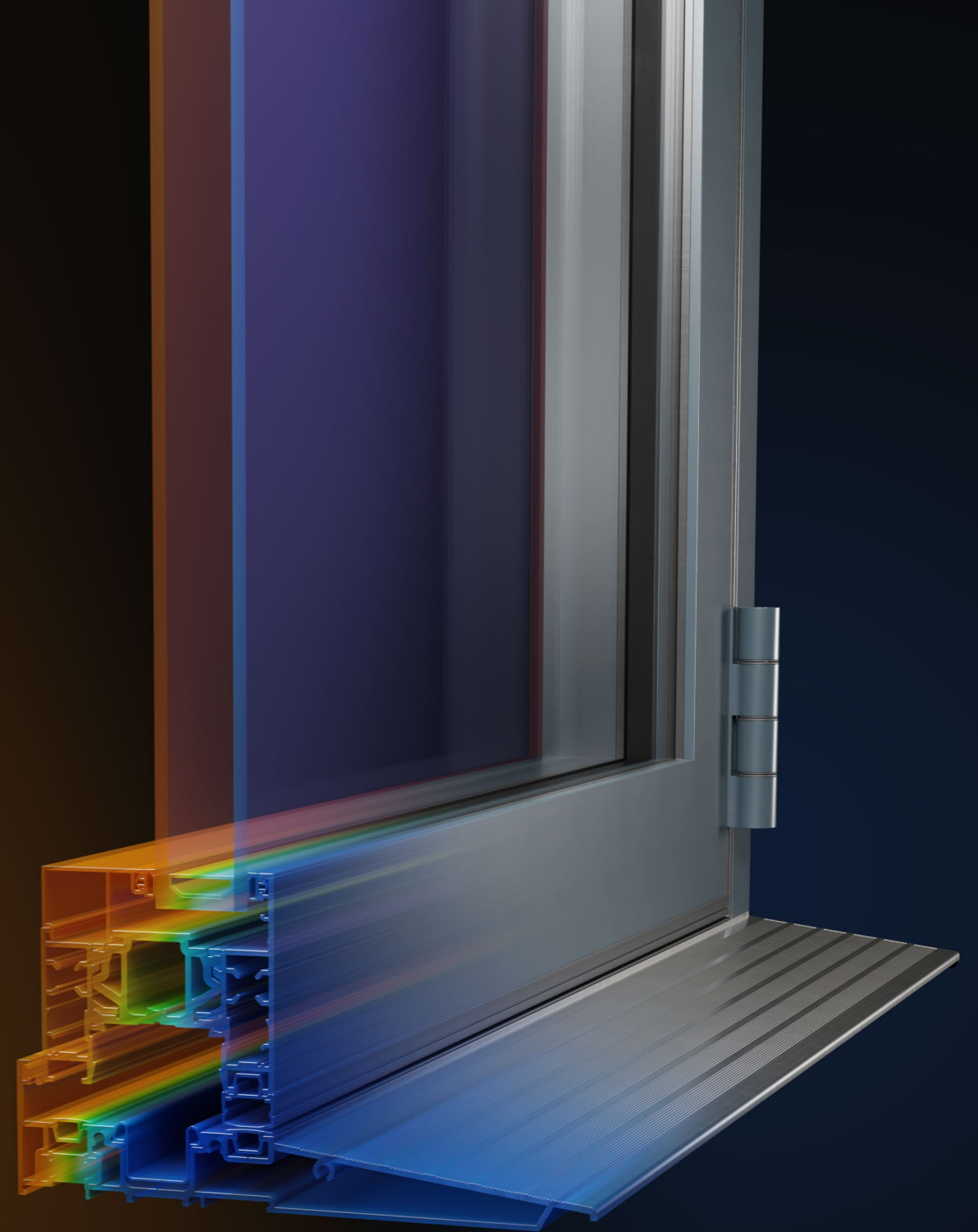
Thermal transmittance, also known as a U-value, measures the rate of transfer of heat. The better-insulated your bi-folding door is, the lower the U-value will be.

1.0 U-value

W/(m²K)
Triple glazed

Available with up to 44mm triple glazing for the ultimate thermal performance. Triple glazing can also provide exceptional acoustic dampening to block out unwanted noise.

**Subject to glass specification, 1.1 U-value for 36mm triple glazed stepped sashes.*



THERMLOCK® technology inside



Outstanding security features built into every bi-fold, keeping you and your home safe

From bespoke Winkhaus Thunderbolt locks, to custom-designed VBH hardware, every element of the Prestige bi-fold has been designed to keep you and your home secure. All our lock options, including our high security Ultion lock upgrade – offer anti-snap, anti-bump and anti-pick protection while our patented[†] corner jointing method creates exceptionally strong frames, maximising the inherent strength of Sheerline's aluminium construction.

We also use full length security interlocks* to protect doors from would-be intruders. So if you are looking for extra peace of mind as standard – we have you covered.



[†]Patent registration number: GB2569209 *On applicable door configurations.

With a wide range of configurations and sizes to suit every project



With a choice of stepped or contemporary, flat faced, opening sashes our slim and perfectly balanced doors can be configured to perfectly suit your needs. Available up to 6.5m wide and up to 2.6m tall, the system also accommodates single and French doors, letting you create a unified look to your home.



Depending on the layout of your room you can choose to have your doors split, left and right, or have them all sliding to one side. Including a single 'traffic' door in your configuration is a great way to create an everyday entrance for when the weather's not so good.





All available in a range of colours and finishes to suit every home

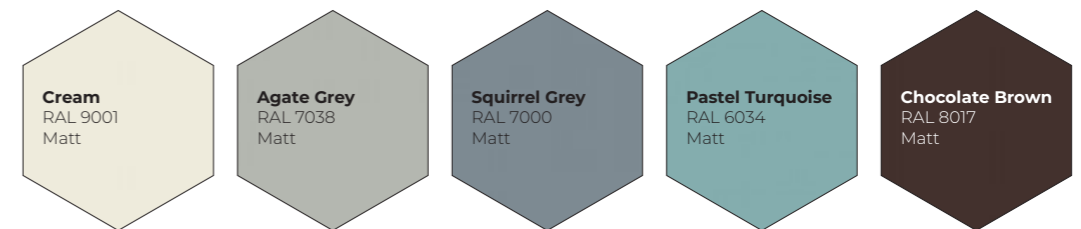
Our Prestige range of bi-folding doors are available in nine powder coated colours, with the option of choosing a different colour for the interior to help

you find the look that is perfect for your property. A further three anodised finishes are available for the ultimate durable and stylish finish.

TRADITIONAL COLOURS



CHARACTER PREMIUM COLOURS



PARAGON ANODISED FINISH



Please note; due to the nature of the manufacturing process and the differences in the methods used to represent these colours in print we cannot guarantee an exact colour match with the colours shown. The RAL colour references are also provided as a guide only.

Four threshold options - all fully weather sealed

Prestige bi-folds come with four threshold options all featuring fully weather-sealed rebates that keep the worst of the British weather safely outside. These rebates also ensure doors aren't over-centred during operation, helping locks to engage correctly.

Our doors also feature clever concealed drainage, eliminating the need for unsightly drainage cover caps.

We'll help you choose the right threshold for your installation so you get the most out of your new panoramic doors.



Quality components for flawless operation

Every element of the Prestige bi-fold has been engineered to operate perfectly. One-piece stainless steel tracks in the head and threshold ensure smooth and reliable rolling of the sashes, while hinges rated to 120kg

help keep every sash perfectly aligned during operation. No aspect of the door has been overlooked and we even use unique tri-material gaskets that feature a low-friction coating for smooth performance and reliable sealing.



Custom designed single rollers eliminate the need for floating mullions. Ensuring that whatever your style of door, our bi-folds have consistent 138mm sightlines between sashes, creating our trademark balanced look.



French doors include an integral finger pull lock eliminating the need for a second handle – continuing the clean, minimal aesthetics. A mishandling device also ensures doors are locked in the correct order.



Slimline internal handles continue the clean lines of the Prestige bi-fold, folding away when not in use. Flush styling also perfectly matches flush Classic and Prestige windows, creating a unified look across your property.

All created from one of the most sustainable materials on the planet

Made from the most recycled and abundant metal in the Earth's crust and produced in the most energy efficient aluminium window facility in the UK, all Sheerline products are manufactured in the most sustainable way possible. Our state-of-the-art, energy efficient SMS HYBREX press delivers energy savings of up to 55% compared to

traditional presses. The design of our systems also vastly reduces fabrication waste, minimising the unnecessary consumption of raw material and helping reduce your home's carbon footprint. This coupled to the high level of energy efficiency built into every product helps build towards a greener future for all.



75%

Did you know 75% of the aluminium produced is still in use, thanks to its durability and highly efficient recycling processes.



Proudly designed and manufactured in the heart of the UK

We are on a mission to transform what customers expect from aluminium windows, doors and lanterns. From design and testing, to the manufacture of every major component at our state-of-the-art facilities, we are passionate about each element that goes into producing every Sheerline system. Delivering a range of high quality products that operate, perform and look exceptional, keeping you warm and secure for many years to come.



Information correct at time of publication. Sheerline reserve the rights to alter product specifications without prior notice. E&OE.

Our integrated approach

With a shared design philosophy, and built around the same ingenious and unique engineering principles, Sheerline's aluminium systems are designed to be used seamlessly together. So rest safe in the knowledge that aesthetics, colours, styles and sightlines will match perfectly across your home.



Prestige

Our most versatile window and door range, Prestige offers a range of options that means it's suitable for the widest range of projects. Prestige is also our most thermally efficient range.

Classic

With ultra slim 59mm sightlines the Classic window system is an ideal replacement for traditional steel windows, or for ultra modern, minimalist, renovations and extensions.



secure | sustainable | stylish
Performance through innovation

sheerline.com